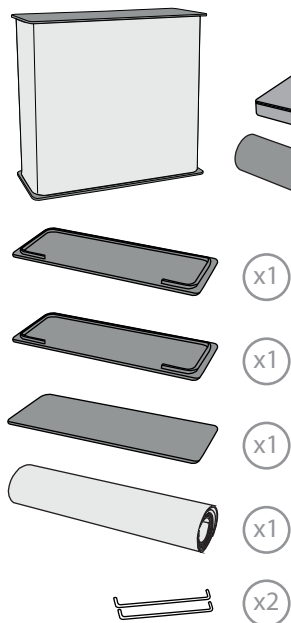


1. GRAPHIC ATTACHMENT



CONTENT



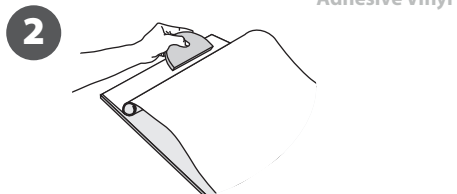
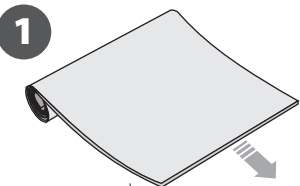
Open the bag, check the content of the bag and take out all the pieces carefully.

To set-up the Promotion counter firstly attach the graphic as show in the picture.

Place the base on the ground and start the application of the flexible panel around the base so that they match both velcro strips. Once the panel is set around the entire base, place the countertop.

Then place the metal stops on the inner recesses. Finally place the inner shelf on the metal stops.

GRAPHIC ATTACHMENT



Adhesive Vinyl

2. SET UP THE STRUCTURE

