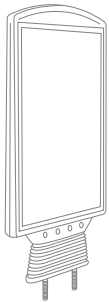


1. GRAPHIC + ANTIREFLECTION PROTECTOR **PLACEMENT**



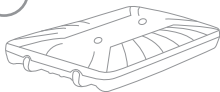
CONTENT

x1



x2

x1

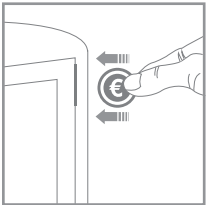


Open and check the content of the boxes and take out all the pieces carefully.

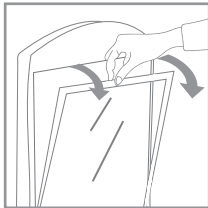
For setting-up the Master Sign Flex Poster, you must place its graphics (supplied separately) following the **next steps** describe below.

GRAPHIC ATTACHMENT

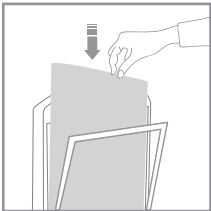
1



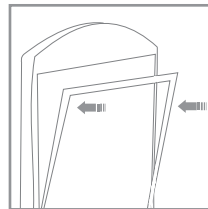
2



3



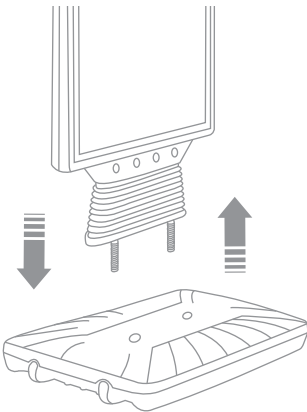
4



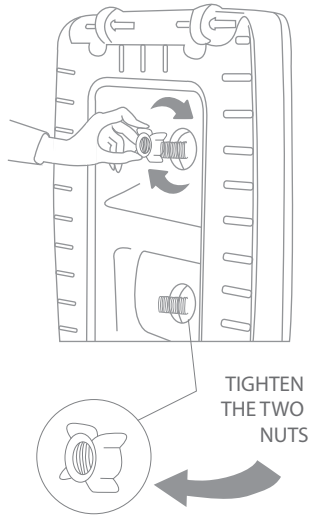
2. SET UP MASTER SIGN FLEX POSTER **STRUCTURE**



1

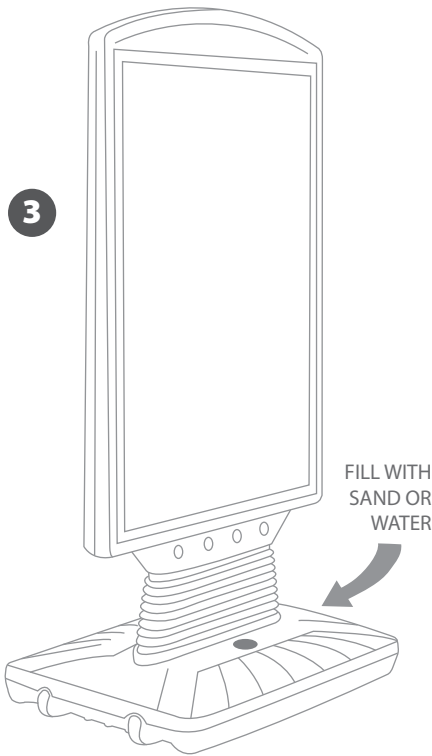


2



TIGHTEN THE TWO NUTS

3



FILL WITH SAND OR WATER